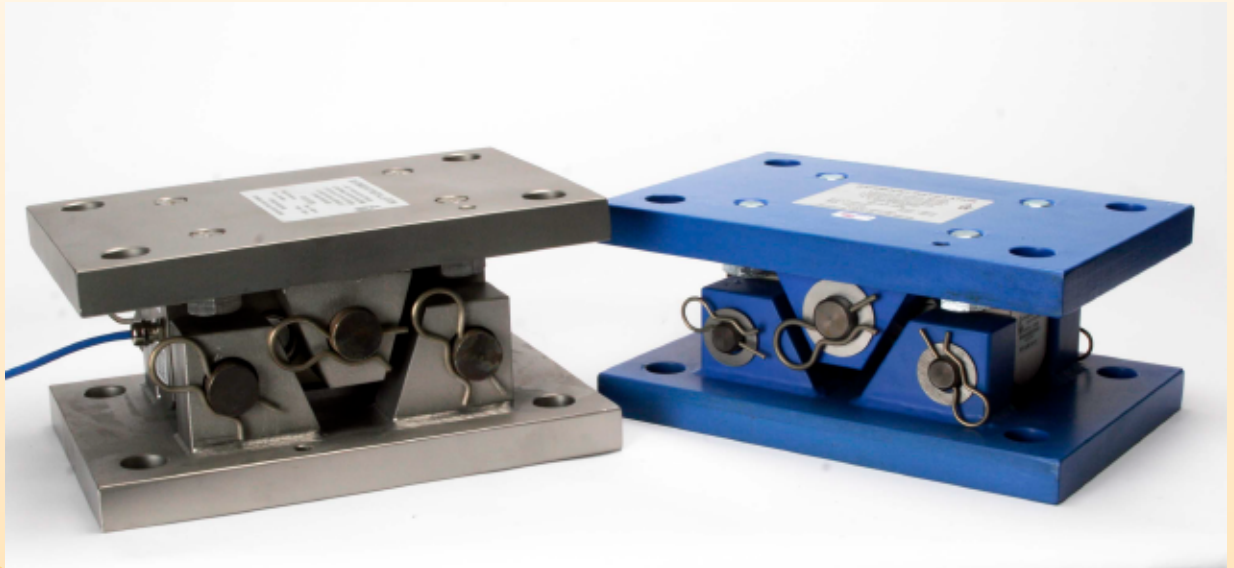




Safemount®

Range of Weighing Assemblies



Features

- Capacities from 3,500kg to 40,000kg.
- For industrial weighing of Silos, Hoppers, Tanks and Vessels.
- Robust design for harsh industrial applications.
- Inbuilt strength 150% maximum overload.
- Fully welded stainless steel loadcell with sealing up to IP68.
- BS EN 1090-2:2018 Execution Class 2.
- Designed and manufactured in the UK with a 5 year warranty.

Options

- 304 Stainless steel loading assembly.
- ATEX certified for use in Zone 1/21 and Zone 2/22 hazardous areas.
- Digital Version with RS485 ASCII, Modbus, CAN and CANopen outputs.
- High temperature range, up to 160°C.
- Extended base plate.
- Integral lift-off assembly.
- Range of industrial instrumentation and weight controllers.

Description

The Safemount® range of loading assemblies are designed for weighing in harsh industrial applications. Uses include silos, hoppers, tanks and vessel weighing. The load cell is manufactured from stainless steel, fully welded and sealed to prevent the ingress of dust or moisture to give accurate, repeatable weighing results with option for use in ATEX Hazardous Areas.

Pneutrol International Limited

sales@pneutrol.com



UK Office
5 Caulside Drive, Antrim, BT41 2DU
United Kingdom
TEL: +44 (0) 28 9448 1800
www.concretespares.co.uk

European Office
Unit 6, Saint Anthony's Business Park, Ballymount Road, D22 VW95
Ireland
TEL: +353 (0) 1 4373653
www.concretespares.ie

ENGINEERING SPECIFICATIONS

SAFEMOUNT® RANGE OF LOADCELL AND WEIGHING ASSEMBLIES

Specifications

Full Scale Output:	2.00mV/V Nominal
Creep (in 20 minutes)	0.05% maximum
Non-Linearity:	0.05% maximum
Hysteresis:	0.05% maximum
Non-Repeatability:	0.05% maximum
Compensated temperature range:	-10°C to +40°C
Operating temperature range:	-40°C to +80°C (-35°C to +60°C for ATEX)
Load cell material:	Stainless steel 17-4 PH
Protection:	up to IP68
Safe Overload:	150%
Insulation Resistance:	2000 MΩ

For ATEX Category 1 - II 1GD

*For ordering suffix the part number with 'X'
i.e. AW313/1000X (see certificate BAS99ATEX2067)

For ATEX Category 3 - II 3GD

*For ordering suffix the part number with 'XD'
i.e. AW313/100XD (see certificate Baseefa09ATEX0147X)

Zero Balance:	±1% F. S.
Supply Voltage:	5-12 V (DC or AC)
Max Voltage:	15V
Output Resistance:	700±5Ω
Input Resistance:	800Ω Nominal

Silos subject to wind loading should be fitted with a lift-off protection. Refer to installation documents.

PART NUMBERS 3,500kg - 40,000kg

Capacity	Stainless steel load cell & mild steel loading assembly	Stainless steel load cell only	Stainless steel load cell & stainless steel assembly	Dummy load cell & mild steel loading assembly	Dummy load cell only
3,500 kg	AW313/03500	AW314/03500	AW315/03500	AW312/00130	AW900/00030
5,000 kg	AW313/05000	AW314/05000	AW315/05000		
10,000 kg	AW313/10000	AW314/10000	AW315/10000		
15,000 kg	AW313/15000	AW314/15000	AW315/15000		
20,000 kg	AW313/20000	AW314/20000	AW315/20000		
30,000 kg	AW313/30000	AW314/30000	AW315/30000		
40,000 kg	AW313/40000	AW314/40000	AW315/40000	AW312/00160	AW900/00060

Up to 30,000kg weight 35kg
40,000kg weight 39kg

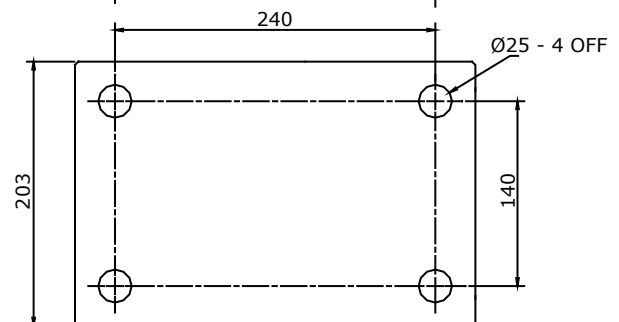
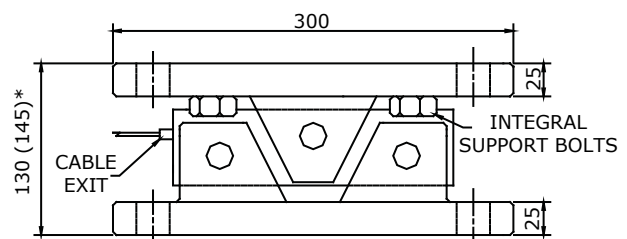
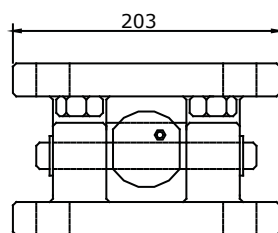
Colour Code:

Positive Excitation - RED
Negative Excitation - BLUE
Positive Signal - GREEN
Negative Signal - YELLOW

Cable: 10 metres
4 core screened

Dimensions given in mm for up to 30,000kg
*(40,000kg shown in brackets)

Refer to installation documents before use



MAXIMUM LOADINGS

Capacity	Maximum Compression Loading	Up-Lift	Maximum Side Force Longitudinal	Maximum Side Force Transverse	Transverse Expansion
Up to 40,000kg	150% of rated capacity	Fit Lift-Off Protection	150 kN	45kN	±5mm

Pneutrol International Limited

sales@pneutrol.com



UK Office
5 Caulside Drive, Antrim, BT41 2DU
United Kingdom
TEL: +44 (0) 28 9448 1800
www.concretespares.co.uk

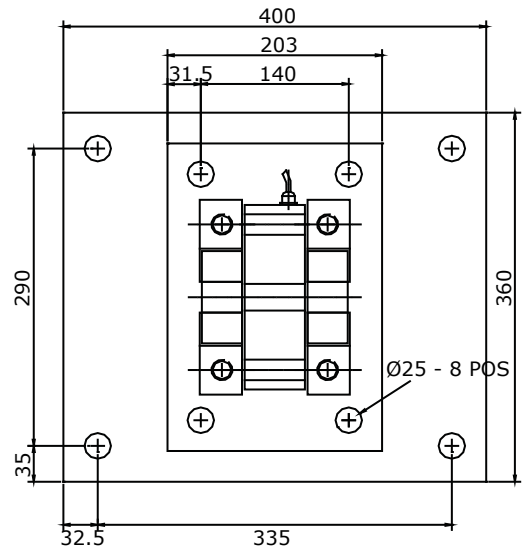
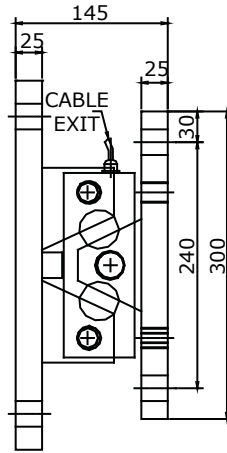
European Office
Unit 6, Saint Anthony's Business Park, Ballymount Road, D22 VW95
Ireland
TEL: +353 (0) 1 4373653
www.concretespares.ie

SAFEMOUNT® ASSEMBLIES

3,500kg - 30,000kg capacity with extended base plate

Part no: AW308/03500
 AW308/05000
 AW308/10000
 AW308/15000
 AW308/20000
 AW308/30000

weight 54kg

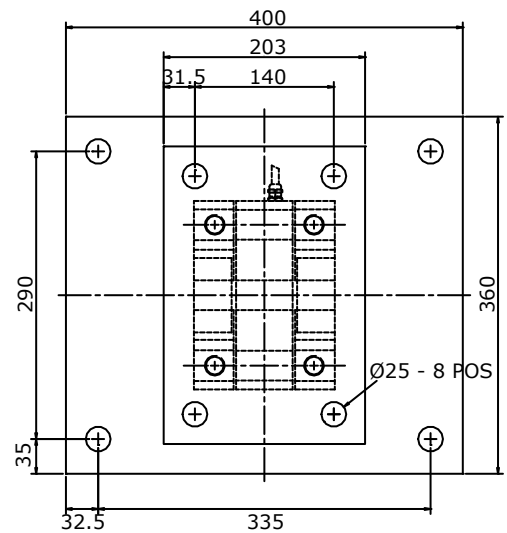
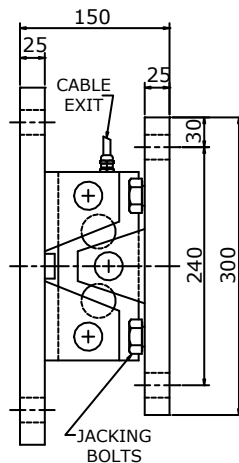


Dimensions given in mm

40,000kg capacity with extended base plate

Part no: AW308/40000

weight 58kg



Dimensions given in mm

MAXIMUM LOADINGS

Capacity	Maximum Compression Loading	Up-Lift	Maximum Side Force Longitudinal	Maximum Side Force Transverse	Transverse Expansion
Up to 40,000kg	150% of rated capacity	Fit Lift-Off Protection	150 kN	45kN	±5mm

Pneutrol International Limited

sales@pneutrol.com



UK Office
 5 Caulside Drive, Antrim, BT41 2DU
 United Kingdom
 TEL: +44 (0) 28 9448 1800
 www.concretespares.co.uk

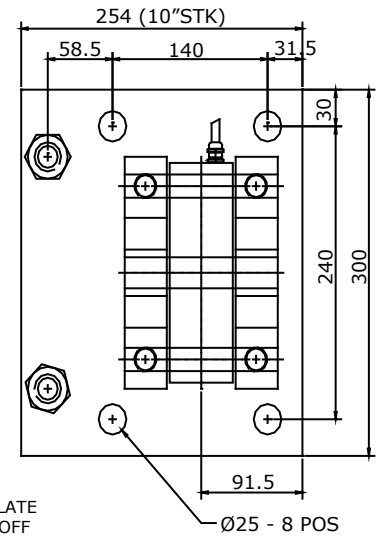
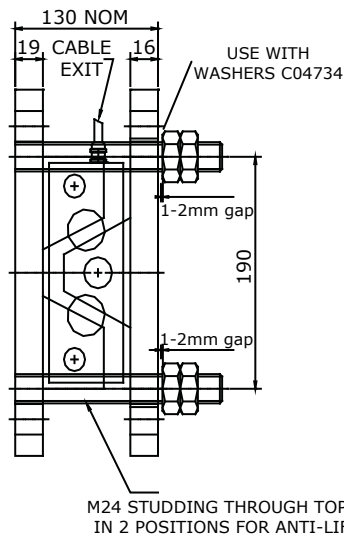
European Office
 Unit 6, Saint Anthony's Business Park, Ballymount Road, D22 VW95
 Ireland
 TEL: +353 (0) 1 4373653
 www.concretespares.ie

SAFEMOUNT® ASSEMBLIES

3,500kg - 30,000kg capacity with integral lift off bolts

Part no: AW307/03500
 AW307/05000
 AW307/10000
 AW307/15000
 AW307/20000
 AW307/30000

weight 43kg



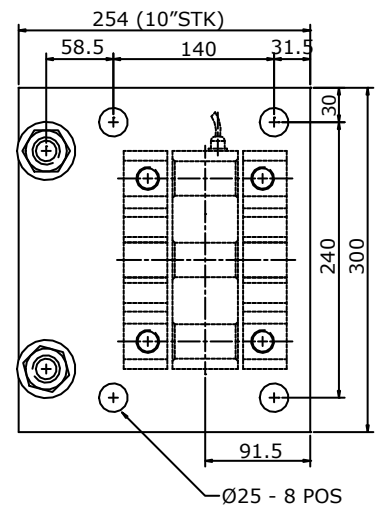
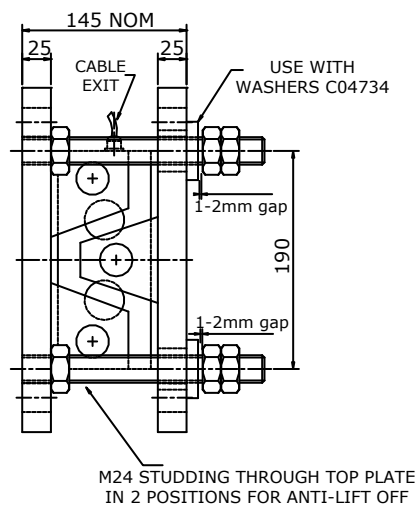
Dimensions given in mm

Ensure that lift-off gap is set correctly. Refer to the installation documents.

40,000kg capacity with integral lift off bolts

Part no: AW307/40000

weight 47kg



Dimensions given in mm

Ensure that lift-off gap is set correctly. Refer to the installation documents.

MAXIMUM LOADINGS

Capacity	Maximum Compression Loading	Maximum Up-Lift Force	Maximum Side Force Longitudinal	Maximum Side Force Transverse	Transverse Expansion
Up to 40,000kg	150% of rated capacity	150kN	150 kN	45kN	±5mm

Pneutrol International Limited

sales@pneutrol.com



UK Office
 5 Caulside Drive, Antrim, BT41 2DU
 United Kingdom
 TEL: +44 (0) 28 9448 1800
 www.concretespares.co.uk

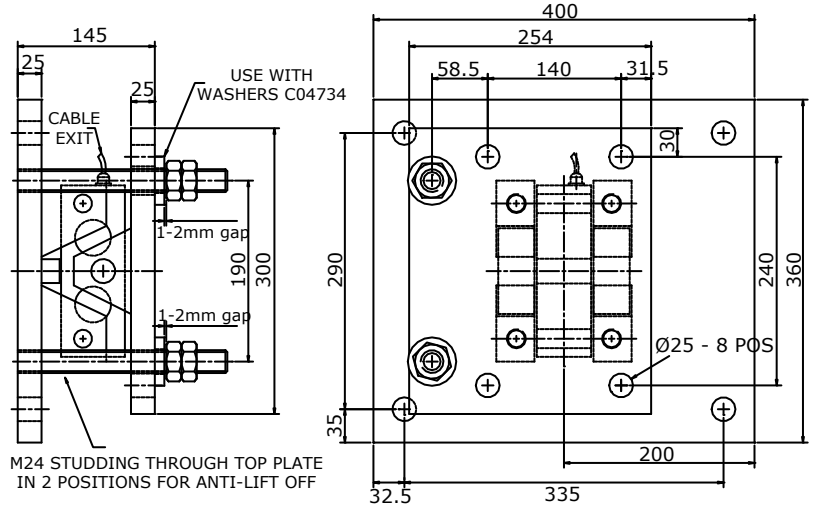
European Office
 Unit 6, Saint Anthony's Business Park, Ballymount Road, D22 VW95
 Ireland
 TEL: +353 (0) 1 4373653
 www.concretespares.ie

SAFEMOUNT® ASSEMBLIES

3,500kg - 30,000kg capacity large base with integral lift off bolts

Part no: AW306/03500
 AW306/05000
 AW306/10000
 AW306/15000
 AW306/20000
 AW306/30000

weight 56kg



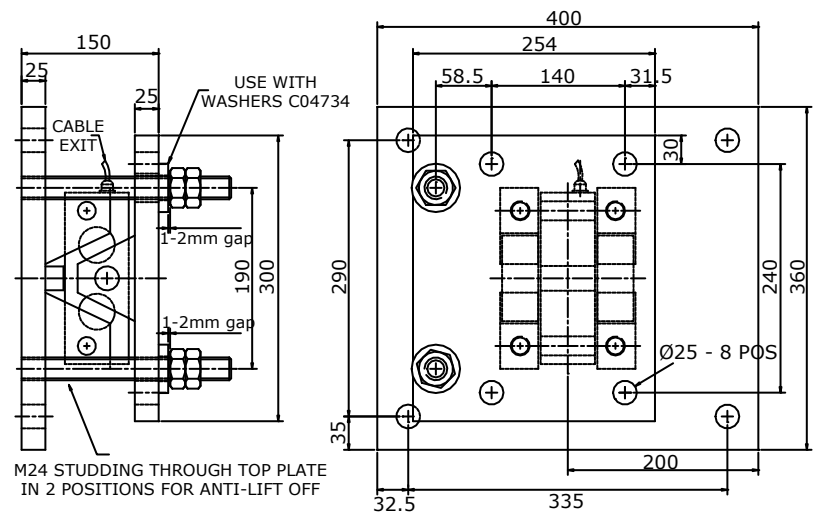
Dimensions given in mm

Ensure that lift-off gap is set correctly. Refer to the installation documents.

40,000kg capacity large base with integral lift off bolts

Part no: AW306/40000

weight 60kg



Dimensions given in mm

Ensure that lift-off gap is set correctly. Refer to the installation documents.

MAXIMUM LOADINGS

Capacity	Maximum Compression Loading	Maximum Up-Lift Force	Maximum Side Force Longitudinal	Maximum Side Force Transverse	Transverse Expansion
Up to 40,000kg	150% of rated capacity	150kN	150 kN	45kN	±5mm

Pneutrol International Limited

sales@pneutrol.com

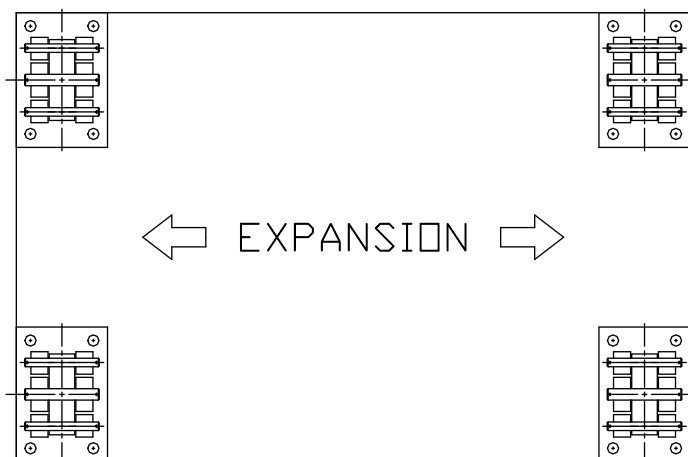
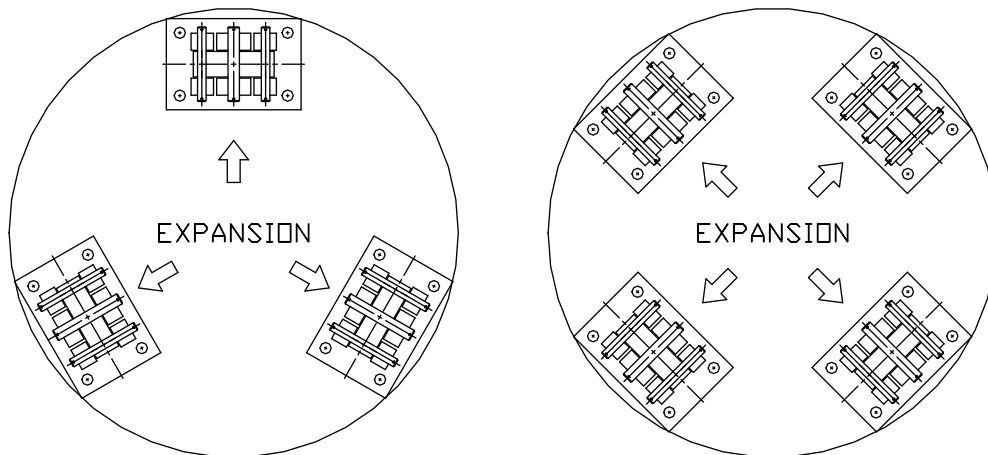


UK Office
 5 Caulside Drive, Antrim, BT41 2DU
 United Kingdom
 TEL: +44 (0) 28 9448 1800
 www.concretespares.co.uk

European Office
 Unit 6, Saint Anthony's Business Park, Ballymount Road, D22 VW95
 Ireland
 TEL: +353 (0) 1 4373653
 www.concretespares.ie

SAFEMOUNT® INSTALLATIONS

The preferred load cell orientation for circular and rectangular vessels



Pneutrol International Limited

sales@pneutrol.com



UK Office
5 Caulside Drive, Antrim, BT41 2DU
United Kingdom
TEL: +44 (0) 28 9448 1800
www.concretespares.co.uk

European Office
Unit 6, Saint Anthony's Business Park, Ballymount Road, D22 VW95
Ireland
TEL: +353 (0) 1 4373653
www.concretespares.ie